

# All eggs are made equal: meta-analysis of egg sexual size dimorphism in birds

J. RUTKOWSKA\*, A. DUBIEC† & S. NAKAGAWA‡

\*Institute of Environmental Sciences, Jagiellonian University, Kraków, Poland

†Museum and Institute of Zoology, Polish Academy of Sciences, Warsaw, Poland

‡Department of Zoology, University of Otago, Dunedin, New Zealand

## Keywords:

egg mass;  
egg volume;  
maternal effect;  
offspring sex;  
phylogenetic meta-analysis;  
publication bias.

## Abstract

Sex-biased resource allocation in avian eggs has gained increasing interest. The adaptive explanations of such allocation are often related to life-history strategies of the studied species. In some species, egg sexual size dimorphism (SSD) was suggested to promote future size differences between adults of each sex. In other species, egg SSD was invoked as an adaptive means by which a mother balances sex-specific nestling mortality. According to the first scenario, mothers should produce bigger eggs for the bigger sex, thus across species, adult SSD should be a significant positive predictor of egg SSD. Under the second scenario, mothers should produce bigger eggs for the smaller sex. If different species use contrasting strategies, then a universal expectation is that there should be a significant relationship between the magnitude of adult SSD and the magnitude of egg SSD, irrespective of the direction of those differences. Our aim was to examine whether the direction of egg SSD is predicted by the direction of adult SSD or whether degree of egg SSD is related to degree of adult SSD. To answer that question, we performed meta-analysis of 63 studies, which included information on egg SSD of 65 effect sizes from 51 avian species. We found that across species, adult SSD does not predict egg SSD. More importantly, the observed variation in effect sizes in our data set was largely explained by sampling error (variance). Although adult SSD is undoubtedly a prominent feature of birds, there is little evidence for egg SSD across avian species.

## Introduction

Maternal effects mediated by egg size may have profound influence on offspring fitness (Williams, 1994). This influence stems from the significant effect of egg size on offspring size and juvenile survival (reviewed by Krist, 2011). The positive effects of egg size might have long-lasting consequences affecting offspring size at adulthood (Potti & Merino, 1994). In avian studies, sex-specific resource allocation has gained much interest from perspectives of how egg size modulates sexual dimorphism of the offspring (reviewed by Badyaev, 2002) and how it affects sibling competition (e.g. Blanco *et al.*, 2003).

Thus, the two most frequently invoked adaptive explanations of egg sexual size dimorphism (SSD) are related to life-history strategies of the studied species.

In some species, egg SSD was suggested to promote future size differences between the adults of each sex. It has been reported that in the white-crowned sparrow *Zonotrichia leucophrys oriantha* (Mead *et al.*, 1987), the house sparrow *Passer domesticus* (Cordero *et al.*, 2000) and the European blackbird *Turdus merula* (Martyka *et al.*, 2010), males, which are the larger sex, hatch from larger eggs. The adaptive explanation for the observed pattern was that increased maternal investment early in life ensures potentially higher fitness returns from male offspring (e.g. Mead *et al.*, 1987; Cordero *et al.*, 2000).

However, not all observations of SSD follow the above pattern. For instance, in the spotless starling

Correspondence: Joanna Rutkowska, Institute of Environmental Sciences, Jagiellonian University, Gronostajowa 7, 30-387 Kraków, Poland.  
Tel.: +48 12 664 5199; fax: +48 12 664 6912;  
e-mail: joanna.rutkowska@uj.edu.pl

*Sturnus unicolor*, males are the bigger adult sex, but they hatch from smaller eggs (Cordero *et al.*, 2001). In the brown songlark *Cinchorhamphus cruralis*, male adults are twice as big as females, but they were reported to hatch from slightly smaller eggs (Magrath *et al.*, 2003). In the American kestrel *Falco sparverius*, female adults are larger than males, yet females hatch from lighter eggs than males (Anderson *et al.*, 1997). In those cases, egg SSD was invoked as an adaptation by which a mother reduces within-brood competition and balances nestling mortality differences between the sexes by producing bigger eggs for the smaller sex.

Under the first scenario, mothers should produce bigger eggs for the bigger sex. Thus, across species, adult SSD should be a significant positive predictor of egg SSD. According to the second scenario, mothers should produce smaller eggs for the bigger sex, and thus, with increasing adult SSD, egg SSD should decrease. If different species use contrasting strategies, then the universal expectation is a significant relationship between the absolute values of adult and egg SSD.

The possibility that adult SSD might affect egg size was established in an analyses relating adult SSD to egg size at the between-species level (Weatherhead & Teather, 1994). This review revealed that with increasing adult SSD, egg size relative to female size increases. The authors verbally refuted the possibility that the effect was driven by females laying larger eggs for the larger sex (Weatherhead & Teather, 1994). Their argument was based on the lack of egg SSD in some highly dimorphic species reported in the relevant studies (e.g. Bancroft, 1984; Weatherhead, 1985; Teather, 1989) available at that time. Currently, studies addressing egg SSD are much more numerous, and this enables us to perform the first systematic quantitative assessment on the relationship between egg size and offspring sex across many bird species.

The aim of our study is twofold. Firstly, we review the existing data on avian egg size in relation to offspring sex and apply the meta-analytical approach to answer whether egg SSD is indeed a common phenomenon. Secondly, we examine whether direction of egg SSD is predicted by the direction of adult SSD or whether degree of egg SSD is related to degree of adult SSD.

## Materials and methods

### Data collection and inclusion criteria

For systematic literature search, we followed the PRISMA (Preferred Reporting Items for Systematic reviews and Meta-Analyses) statement as much as possible (<http://www.prisma-statement.org/>). The literature was searched on *Web of Science* and *Google Scholar* (to identify studies not reported in the literature databases, such as dissertations) using the keywords: 'egg size,'

'egg mass,' 'egg volume,' 'laying order,' 'hatching order,' 'sexual dimorphism,' 'sex ratio,' 'sex' and 'bird\*' in different combinations. From the resulting list, we identified publications, in which title indicated that the study was carried out on birds, and scanned their abstracts looking for information on egg size comparisons in relation to sex. When such information was found, or the abstract indicated that collected data might enable such comparisons, the full text was consulted. Where papers were selected, their references (backward search) and citation record (forward search) were searched for other articles providing data of interest.

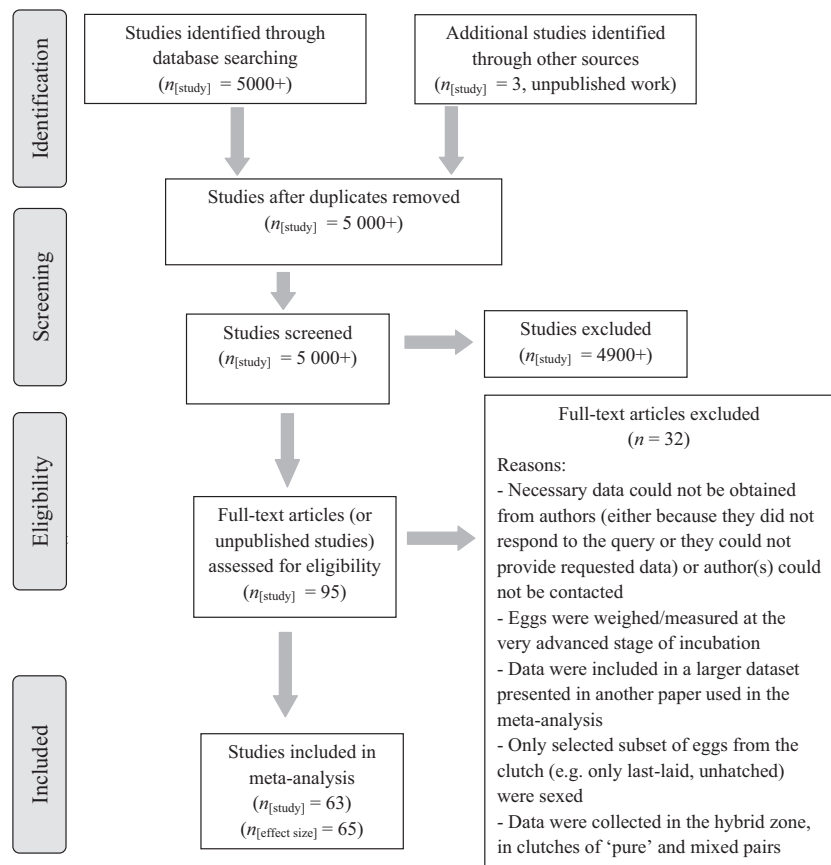
When available, information on estimates of mean male and female egg size, their SD (or SE) and sample sizes (the numbers of eggs, clutches and females included in studies) was extracted from the publication. If a publication (among the final selection of publications) lacked some of the required information, or information in the publication indicated that the data of interest were collected, but not presented, the corresponding author or co-authors were contacted. Contacted authors were also asked for any unpublished data.

In some studies, numerical data were extracted from graphs using WebPlotDigitizer (Rohatgi; online source). When data on sex-associated differences in egg size were presented in relation to laying order and the information on sample size was available, weighted means of egg size were calculated for male and female eggs. When the sample size for each category was not available, arithmetic mean was calculated.

If descriptive statistics were not available, we collected inferential statistics, which were associated with the difference between female and male egg size, namely these were *t* and *F* values and the associated degrees of freedom d.f. (note that the numerator d.f. of *F* values was always 1 as comparisons were between two categories, male and female eggs). In most cases, information on egg size was available in the form of either 'volume' or 'mass', and we recorded which measure was used. In one case (Badyaev *et al.*, 2006a), egg size measurements were two dimensional (an area-based measure), but this measurement was noted as volume. When both were available (e.g. Clotfelter, 1996), we extracted data on mass.

Information on adult SSD was obtained from the same study as the data on egg SSD. When it was not available in the original publication, we used the Dunning (2008) database, Cornell Lab of Ornithology online resources and published papers on specific species. For statistical analysis, we used the natural logarithm of adult SSD.

There are a number of studies, which we had to exclude (Fig. 1), although they potentially had relevant information. Those studies and the reasons for exclusion are summarized in Data S1.



**Fig. 1** A PRISMA flow diagram of our data search and collection.

### Effect size and sampling variance calculation

Although it is more customary to use standardized mean difference (e.g. Hedge's  $d$ ) for meta-analysis of comparisons between two means (Nakagawa & Cuthill, 2007), we used  $Zr$  (Fisher's  $z$ -transformation of correlation coefficient) as our standardized effect size. We made that choice because estimating the sampling variances that accompany effect sizes in our data set was easier for  $Zr$  than Hedge's  $d$ . We note that the use of  $Zr$  is common in ecological and evolutionary meta-analyses (Nakagawa & Santos, 2012), even when assessing differences. For example,  $Zr$  values (or correlation coefficients) have been commonly used in meta-analyses of sex ratio adjustment studies (e.g. West & Sheldon, 2002). We also note that  $r$  (or  $Zr$ ) and  $d$  values are readily convertible (Nakagawa & Cuthill, 2007).

The calculation of sampling variance for an effect size requires the sample size associated with that effect size; in the case of  $Zr$ ,  $N-3$  is used for the calculation of sampling variance. However, in most studies, more than one egg came from any one clutch (or one female). Hence, if the number of eggs were used as  $N$ , we would risk introduction of a correlated data structure (i.e. pseudo-replication), increasing the rate of type I error (see Higgins & Green, 2008).

Therefore, we used clutch as our clustering unit to calculate 'effective sample size' (Rao & Scott, 1992); this was done using the following formulas:

$$M = N_{\text{[egg]}}/N_{\text{[clutch]}}$$

$$D = 1 + (M - 1)ICC,$$

$$N_{\text{[effective]}} = N_{\text{[egg]}}/D,$$

where  $N_{\text{[egg]}}$ ,  $N_{\text{[clutch]}}$  and  $N_{\text{[effective]}}$  are the number of eggs, the number of clutches and the effective sample size for an effect size,  $M$  is the average cluster (i.e. clutch size),  $D$  is known as the 'design effect' and ICC is intraclass correlation (Higgins & Green, 2008). Note that this series of calculations will result in  $N_{\text{[effective]}} = N_{\text{[egg]}}$  if  $N_{\text{[egg]}} = N_{\text{[clutch]}}$ . Also, when  $ICC = 1$ ,  $N_{\text{[effective]}} = N_{\text{[clutch]}}$ , whereas when  $ICC = 0$ ,  $N_{\text{[effective]}} = N_{\text{[egg]}}$ . The number of clutches used in a study was often identical to the number of females. If there was no information on the number of clutches, we used the number of females.

ICC is known as 'repeatability' in the biological literature (Nakagawa & Schielzeth, 2010). In our case, ICC represents how consistent egg size is within a clutch in relation to egg sizes in other clutches. Unfortunately, no studies provided ICC or the information required to obtain it, and thus, we estimated 'representative ICC'

using 3 data sets, namely Rutkowska & Cichoń (2005), Pariser *et al.* (2012) and Bowers *et al.* (2013). ICC estimates for egg size were 0.65, 0.57 and 0.68, respectively. Therefore, we decided to create two data sets: one using the ICC of 0.5 and the other 0.8. Below, we only present the results from the data set with the ICC of 0.8, which provides more conservative estimates of sampling variance. We provide the results from the data set with ICC of 0.5 in the Data S1. Notably, almost all results are qualitatively identical between the two data sets.

Correlation coefficients,  $r$  (later converted to  $Z_r$  values), for meta-analysis were calculated using standard formulas provided in Lipsey and Wilson (2001) and Nakagawa and Cuthill (2007). We note that in many cases, first,  $d$  values were calculated using those formulas, before being converted to  $r$ . Calculating effect sizes from  $t$  values from paired  $t$ -tests and  $F$  values from repeated-measures ANOVA (i.e. nonindependent tests) requires a correlation value between pairs, that is, between male and female eggs from the same clutches/females (note that this correlation is different from correlation values,  $Z_r$ , used for meta-analysis); see Equation 4 in Nakagawa & Cuthill (2007). Such a correlation is quantitatively very similar to ICC in this scenario (for a relevant explanation, see Nakagawa and Schielzeth, 2010). Therefore, we used correlations of 0.5 and 0.8 in the respective data sets to obtain our effect size,  $Z_r$ , from  $t$  and  $F$  values of nonindependent tests (only five cases required to assume such correlations).

Our database includes 65 effect sizes from 63 studies, covering 51 species (Fig. 1; see the Table S1). From Badyaev *et al.* (2006a), we extracted two effect sizes from two different populations of one species, whereas from Slagsvold *et al.* (1992), we obtained two effect sizes from two different species. Therefore, we assumed

that we had 65 independent effect sizes in our meta-analysis, although we also considered phylogenetic nonindependence in separate analysis (see Results).

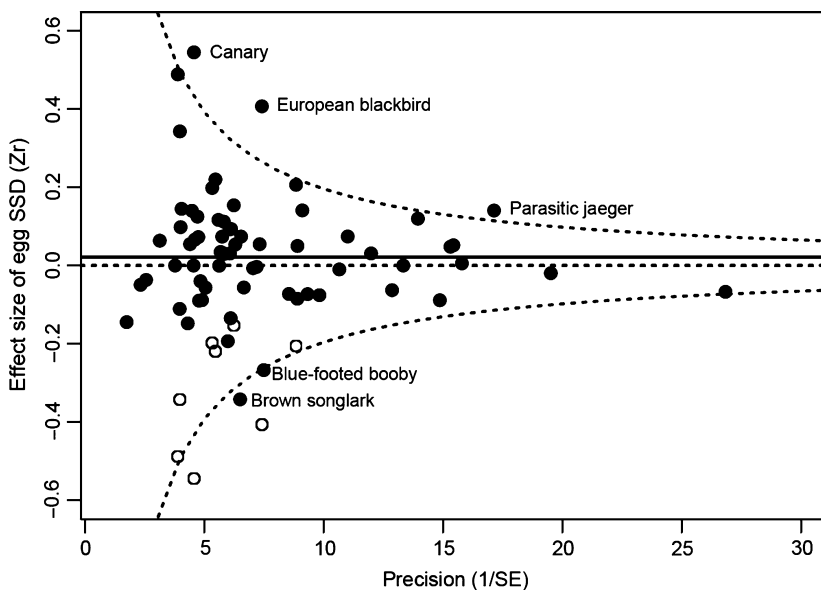
### Statistical analysis

All analyses were conducted in the R environment (version 3.0.1; R Development Core Team 2013). The random-effects model (meta-analysis) and mixed-effects model (meta-regression) with the restricted maximum likelihood (REML) estimator were fitted using the R package, *metafor* (Viechtbauer, 2010). Also, for phylogenetic meta-analytic models (Hadfield & Nakagawa, 2010; Nakagawa & Santos, 2012), we used the R package, *MCMCglmm* (Hadfield, 2010). Statistical heterogeneity was quantified using  $I^2$  for standard meta-analysis (Higgins *et al.*, 2003) and a modified version of  $I^2$  for phylogenetic meta-analysis (described in Nakagawa & Santos, 2012). The values of 25%, 50% and 75% are considered to be low, medium and high, respectively (Higgins *et al.*, 2003). This is, in a way, similar to  $r$  values of 0.1, 0.3 and 0.5, which are considered to be small, moderate and large, respectively (*sensu* Cohen, 1988). For  $Z_r$ , corresponding values are 0.10, 0.31 and 0.55. For sensitivity analyses where we checked potential biases and publication biases in our data, we used functions from *metafor*.

## Results

### Meta-analysis and meta-regression

Egg SSD was not different from zero (random-effects model:  $b_{[\text{meta-analytic mean}]} = 0.021$ , 95% confidence interval, CI =  $-0.011$  to  $0.053$ ; Fig. 2). Importantly,



**Fig. 2** A funnel plot with solid points showing effect sizes and corresponding precisions (the inverse of sampling standard error, SE) and with open points showing 'filled' data points from the trim-and-fill analysis (see the main text). Dotted lines indicate the effect size of 0 and its 95% confidence interval; solid line denotes the calculated meta-analytic mean. The five species, outside of the confidence interval around 0, were listed with species names.

statistical heterogeneity measured by  $I^2$  is low (12.70%). Also, this heterogeneity was not statistically significant (heterogeneity test:  $Q_{64} = 62.882$ ,  $P = 0.516$ ), which indicated that our data containing 65 effect sizes are consistent with the idea that there is no or little egg SSD. In other words, after controlling for sampling variance, there was only low or little variation left in our data. The results from our phylogenetic meta-analysis are quantitatively very similar to the aforementioned mean effects and are presented in the Data S1.

As expected from the above result, adult SSD did not predict the direction of egg SSD (meta-regression:  $b_{[\ln(\text{adult SSD})]} = -0.148$ , 95% CI =  $-0.488$  to  $0.190$ ; Fig. 3a). To test whether degree of egg SSD is related to degree of adult SSD, we used a Spearman's rank correlation test between the absolute values of effect sizes and those of adult SSD on the natural logarithm scale. This is because the absolute values of effect sizes were not normally distributed (they followed what is known as a 'folded' normal distribution, cf. Morrissey & Hadfield, 2012), which meant that we could not use meta-analytic models. There was a very low and nonsignificant relationship between the absolute values of effect sizes and adult SSD ( $r_s = 0.067$ , 95% CI =  $-0.179$  to  $0.306$ ; Fig. 3b).

### Sensitivity analysis and publication bias

To ascertain the robustness of our results, we ran a meta-regression model with three potentially confounding variables: (i) publication year (see Trikalinos & Ioannidis, 2005); unpublished effect sizes were assigned the year, 2014; this variable was centred (*sensu* Schielzeth, 2010); (ii) whether the effect size was based on egg mass or volume; and (iii) whether effect sizes were estimated from descriptive or inferential statistics. None of these factors predicted variation in effect size (meta-regression:  $b_{[\text{Year}]} = -0.002$ , 95% CI =  $-0.007$  to  $0.003$ ,  $b_{[\text{Measure}]} = 0.022$ , 95% CI =  $-0.044$  to  $0.088$ ,  $b_{[\text{Statistic}]} = 0.051$ , 95% CI =  $-0.037$  to  $0.138$ ).

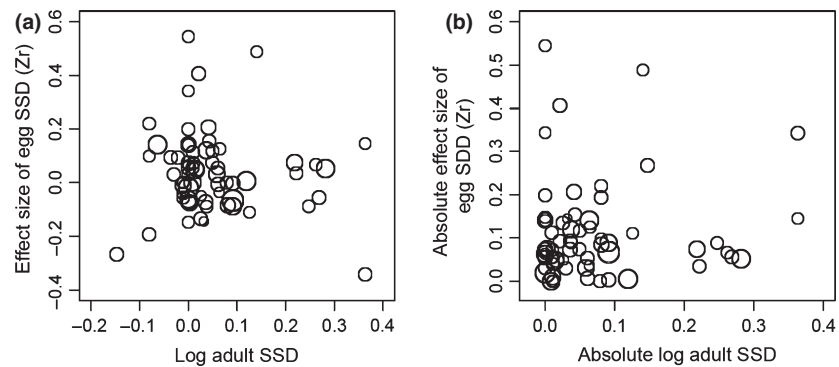
We also tested for publication bias using both Egger's tests (Egger *et al.*, 1997) and the trim-and-fill method

with the 'LO' estimator (Duval & Tweedie, 2000a,b) because Egger's tests are sensitive to statistical power (Higgins & Green, 2008). Although Egger's test did not provide any evidence for publication bias ( $t_{63} = 1.621$ ,  $P = 0.110$ ), the trim-and-fill method identified asymmetry in the funnel plot and added eight potentially 'missing' effect sizes (Fig. 2). The meta-analytic mean after taking into account these filled values was very close to zero (random-effects model:  $b_{[\text{meta-analytic mean}]} = 0.001$ , 95% CI =  $-0.032$  to  $0.034$ ), reinforcing the lack of evidence of egg SSD across avian species.

### Discussion

In this study, we meta-analytically tested whether egg SSD is a general phenomenon across bird species. Our results suggest that egg SSD is rather an exception than the norm (Fig. 2). We also tested two frequently invoked explanations of egg SSD in relation to adult SSD. We did not find any evidence that adult SSD could predict egg SSD (Fig. 3). Our additional sensitivity analyses and bias corrections indicated the robustness of our results. Thus, although adult SSD has a significant effect on between-species egg size allometry (Weatherhead & Teather, 1994), we conclude that female birds, as a general rule, do not seem to adjust egg size according to the sex of their offspring.

This conclusion is in line with a number of studies that expected significant egg SSD in highly dimorphic species, but failed to find any evidence of such a trend. For instance, the Northern lapwing *Vanellus vanellus* exhibits pronounced adult SSD and strong sexual selection, yet its eggs are not sexually dimorphic (Lislevand *et al.*, 2005). Note, however, that nonstatistically significant differences in egg size might only reflect the lack of statistical power in data sets; this point is discussed in detail below. The brown songlark *Cinclorhamphus cruralis* has the highest adult male-to-female body mass ratio in our data set, yet the reports on its egg SSD either show that daughters hatch from larger (Magrath *et al.*, 2003) or nonsignificantly smaller eggs (Isaksson *et al.*, 2010). Previously assumed egg SSD of the white-crowned sparrow (Mead *et al.*, 1987) and of the house



**Fig. 3** Scatter plots of: (a) effect sizes ( $Z_r$ ) of egg sexual size dimorphism, sexual size dimorphism (SSD) and adult SSD on the natural logarithm scale and (b) their absolute values; the size of bubbles represents their relative precisions (the larger the more precise).



sparrow *Passer domesticus* (Cordero *et al.*, 2000) has also been questioned by newer the findings of Bonier *et al.* (2007) and Wetzel *et al.* (2012), respectively. Although female birds are able to lay extremely dimorphic eggs (Stein & Williams, 2013), and there are several benefits that could come along with egg SSD (Mead *et al.*, 1987; Anderson *et al.*, 1997; Cordero *et al.*, 2000; Love & Williams, 2011), it seems that maternal adjustment of egg size in relation to offspring sex is not a prevailing phenomenon.

It is entirely possible that there might be a subtle size difference between male- and female-bearing eggs. However, to detect such an effect at the significance level ( $\alpha = 0.05$ ), one would have to measure approximately 20,000 eggs, assuming our meta-analytic mean ( $r = \sim 0.02$ ; equivalent to  $d = \sim 0.04$ ) with the statistical power of 80%. Such data sets are usually not available for wild birds. In our data set, 3313 eggs (from 205 clutches; extended data from Petrie *et al.* (2001)) represented the largest sample size. In poultry species, in which one would expect larger data sets, no relevant information is available. In fact, the poultry industry would be vitally interested in selecting for chicken breeds in a way that would enable a predictable association between egg sex and size. To our knowledge, such goal has not been achieved. This might be due to stabilizing selection on 'optimal' egg size, which is evidenced by the highest hatching success for intermediate-sized eggs (Lerner, 1951).

The lack of clear support for sex-specific investment in the egg size across species does not preclude the possibility of differential maternal allocation at a finer scale. Firstly, egg SSD might be observed at only a certain position of the egg-laying sequence, an illustrative case being the Eurasian kestrels *Falco tinnunculus*, in which only the first eggs are sexually dimorphic (Blanco *et al.*, 2003). Our meta-analysis bares a small risk of diluting such effect as it takes into consideration all eggs. Secondly, eggs might be identical in terms of total mass, but the sexes could differ in relative content of albumen and white, as was reported in the ring-billed gull *Larus delawarensis* (Chin *et al.*, 2012). Finally, it is also likely that egg components, such as immunoglobulins (Saino *et al.*, 2003; Martyka *et al.*, 2011), antioxidants and hormones (Petrie *et al.*, 2001; Badyaev *et al.*, 2006b; Pariser *et al.*, 2012; but see Rubolini *et al.*, 2011) are distributed in a sex-specific manner. More studies on egg quality are needed before it could be assessed whether fine-scale sex-specific egg dimorphism is a prevailing strategy across birds.

Five of 65 effect sizes, corresponding to five different species, were outside the 95% CI around zero as seen in Fig. 2. Although, by random chance, we expected at least 3 species to be outside the 95% CI, egg SSD could constitute a biologically relevant phenomenon in these five cases. We find, however, no obvious ecological explanation why those data stand out. The species that

are outstanding in our database are neither phylogenetically related nor particularly dimorphic as adults [the canary, *Serinus canaria* (Leitner *et al.*, 2006), the European blackbird (Martyka *et al.*, 2010), the parasitic jaeger, *Stercorarius parasiticus* (Janssen *et al.*, 2006) and the blue-footed booby, *Sula nebouxii* (D'Alba *et al.*, 2007)]. As mentioned before, in the case of brown songlark, the results from two studies were inconsistent.

Differences in egg size have sometimes been discussed from the perspective of offspring sex determination and the potential interplay between egg size and offspring sex at the proximate level (e.g. Rutkowska & Cichoń, 2002; Müller *et al.*, 2005). In the light of our current results and given that final egg size is decided after fertilization (Etches, 1996), it seems improbable that egg size is under the influence of an egg's sex. What is more likely is that both egg size and offspring sex are influenced by a third factor. For example, in several avian species, laying order has a simultaneous effect on offspring sex, egg components and egg size (reviewed in Gil, 2008; see also Blanco *et al.*, 2003).

In conclusion, although female birds of some species are known to be able to adjust egg size within a clutch and such adjustments could indeed be beneficial (e.g. Stein & Williams, 2013), it seems that there has not been strong enough selection for within-species (nor within-female) adjustment of egg size based on the offspring sex. We recommend that any future studies in this topic, if at all, need to have an ambitious sampling design measuring eggs (at least one male and one female egg) from 200 or more different mothers. Such a design may allow researchers to statistically detect small SSD in eggs (an effect size of  $r = \sim 0.1$ , or  $d = \sim 0.2$ ) with a power of 80%.

In a wider context, we can see that our study adds another example, to the evolutionary and ecological literature, where meta-analysis revealed that previously alleged effects or relationships are unlikely to exist, or are likely to be too small to be biologically important (for examples, see Palmer, 1999; Jennions *et al.*, 2013a). This highlights the importance of 'meta-analytic thinking', whereby we should view each empirical piece of work as a modest contribution to a specific topic (Thompson, 2002), and also of 'effective thinking' (Nakagawa & Cuthill, 2007), where interpretation of scientific results should focus on the magnitude of effect rather than statistical significance. Conclusions from single studies are more likely to be erroneous than meta-analytic conclusions due to type I and type II errors; the latter is common for studies with small sample sizes, which are typical of ecological and evolutionary studies. Therefore, the generalization of results from a single piece of empirical work is limited, and meta-analytic insights are often required to resolve inconsistent empirical results and to draw general conclusions (Nakagawa & Poulin, 2012; Jennions *et al.*, 2013b).

## Acknowledgments

We are grateful to all the authors who shared with us the details of their published and unpublished studies. We thank Zofia Prokop for helpful comments on the manuscript and Alistair Senior for comments and proof-reading the final version. J. R. was supported by DS/WBiNoZ/INoŚ/757/13 and by Polish National Science Center DEC-2012/07/B/NZ8/01293. S. N. was supported by the Rutherford Discovery Fellowship (New Zealand).

## References

- Anderson, D.J., Reeve, J. & Bird, D.M. 1997. Sexually dimorphic eggs, nestling growth and sibling competition in American kestrels *Falco sparverius*. *Funct. Ecol.* **11**: 331–335.
- Badyaev, A.V. 2002. Growing apart: an ontogenetic perspective on the evolution of sexual size dimorphism. *Trends Ecol. Evol.* **17**: 369–378.
- Badyaev, A.V., Oh, K.P. & Mui, R. 2006a. Evolution of sex-biased maternal effects in birds: II. Contrasting sex-specific oocyte clustering in native and recently established populations. *J. Evol. Biol.* **19**: 909–921.
- Badyaev, A.V., Seaman, D.A., Navara, K.J., Hill, G.E. & Mendonca, M.T. 2006b. Evolution of sex-biased maternal effects in birds: III. Adjustment of ovulation order can enable sex-specific allocation of hormones, carotenoids, and vitamins. *J. Evol. Biol.* **19**: 1044–1057.
- Bancroft, G.T. 1984. Patterns of variation in size of boat-tailed grackle *Quiscalus major* eggs. *Ibis* **126**: 496–509.
- Blanco, G., Martínez-Padilla, J., Serrano, D., Dávila, J.A. & Viñuela, J. 2003. Mass provisioning to different-sex eggs within the laying sequence: consequences for adjustment of reproductive effort in a sexually dimorphic bird. *J. Anim. Ecol.* **72**: 831–838.
- Bonier, F., Martin, P.R. & Wingfield, J.C. 2007. Maternal corticosteroids influence primary offspring sex ratio in a free-ranging passerine bird. *Behav. Ecol.* **18**: 1045–1050.
- Bowers, E.K., Munclinger, P., Bureš, S., Kučerová, L., Nádvořník, P. & Krist, M. 2013. Cross-fostering eggs reveals that female collared flycatchers adjust clutch sex ratios according to parental ability to invest in offspring. *Mol. Ecol.* **22**: 215–228.
- Chin, E.H., Sharp, C.M. & Burness, G. 2012. Sex-biased resource allocation in ovo in a sexually size-dimorphic species. *J. Avian Biol.* **43**: 385–389.
- Clotfelter, E.D. 1996. Mechanisms of facultative sex-ratio variation in zebra finches (*Taeniopygia guttata*). *Auk* **113**: 441–449.
- Cohen, J. 1988. *Statistical Power Analysis for the Behavioral Sciences*. Lawrence Erlbaum Associates, Hillsdale, NJ.
- Cordero, P.J., Griffith, S.C., Aparicio, J.M. & Parkin, D.T. 2000. Sexual dimorphism in house sparrow eggs. *Behav. Ecol. Sociobiol.* **48**: 353–357.
- Cordero, P.J., Viñuela, J., Aparicio, J.M. & Veiga, J.P. 2001. Seasonal variation in sex ratio and sexual egg dimorphism favouring daughters in first clutches of the spotless starling. *J. Evol. Biol.* **14**: 829–834.
- D'Alba, L., Torres, R. & Bortolotti, G.R. 2007. Seasonal egg-mass variation and laying sequence in a bird with facultative brood reduction. *Auk* **124**: 643–652.
- Dunning, J.B. 2008. *CRC Handbook of Avian Body Masses*, 2nd edn. CRC Press, Boca Raton, FL.
- Duval, S. & Tweedie, R. 2000a. A nonparametric “Trim and Fill” method of accounting for publication bias in meta-analysis. *J. Am. Stat. Assoc.* **95**: 89–98.
- Duval, S. & Tweedie, R. 2000b. Trim and fill: a simple funnel-plot-based method of testing and adjusting for publication bias in meta-analysis. *Biometrics* **56**: 455–463.
- Egger, M., Smith, G.D., Schneider, M. & Minder, C. 1997. Bias in meta-analysis detected by a simple, graphical test. *BMJ* **315**: 629–634.
- Etches, R.J. 1996. *Reproduction in Poultry*. CAB International, Wallingford, Oxon.
- Gil, D. 2008. Chapter 7 Hormones in avian eggs: physiology, ecology and behavior. *Adv. Study Behav.* **38**: 337–398.
- Hadfield, J.D. 2010. MCMC methods for multi-response generalized linear mixed models: the MCMCglmm R package. *J. Stat. Softw.* **33**: 1–22.
- Hadfield, J.D. & Nakagawa, S. 2010. General quantitative genetic methods for comparative biology: phylogenies, taxonomies and multi-trait models for continuous and categorical characters. *J. Evol. Biol.* **23**: 494–508.
- Higgins, J.P.T. & Green, S. 2008. *Cochrane Handbook for Systematic Reviews of Interventions, Version 5.1.0*, 2012 edn. Wiley-Blackwell, Chichester.
- Higgins, J.P.T., Thompson, S.G., Deeks, J.J. & Altman, D.G. 2003. Measuring inconsistency in meta-analyses. *BMJ* **327**: 557–560.
- Isaksson, C., Magrath, M.J.L., Groothuis, T.G.G. & Komdeur, J. 2010. Androgens during development in a bird species with extremely sexually dimorphic growth, the brown songlark, *Cinchorhamphus cruralis*. *Gen. Comp. Endocrinol.* **165**: 97–103.
- Janssen, K., Erikstad, K.E. & Bensch, S. 2006. Offspring sex ratio allocation in the parasitic jaeger: selection for pale females and melanistic males? *Behav. Ecol.* **17**: 236–245.
- Jennions, M.D., Lortie, C.J. & Koricheva, J. 2013a. Using meta-analysis to test ecological and evolutionary theory. In: *The Handbook of Meta-analysis in Ecology and Evolution* (J. Koricheva, J. Gurevitch, K. Mengersen, eds), pp. 381–403. Princeton University Press, Princeton.
- Jennions, M.D., Lortie, C.J. & Koricheva, J. 2013b. Role of meta-analysis in interpreting the scientific literature. In: *The Handbook of Meta-analysis in Ecology and Evolution* (J. Koricheva, J. Gurevitch, K. Mengersen, eds), pp. 364–380. Princeton University Press, Princeton.
- Jetz, W., Thomas, G.H., Joy, J.B., Hartmann, K. & Mooers, A.O. 2012. The global diversity of birds in space and time. *Nature* **491**: 444–448.
- Krist, M. 2011. Egg size and offspring quality: a meta-analysis in birds. *Biol. Rev.* **86**: 692–716.
- Leitner, S., Marshall, R.C., Leisler, B. & Catchpole, C.K. 2006. Male song quality, egg size and offspring sex in captive canaries (*Serinus canaria*). *Ethology* **112**: 554–563.
- Lerner, M. 1951. Natural selection and egg size in poultry. *Am. Nat.* **85**: 365–372.
- Lipsey, M.W. & Wilson, D.B. 2001. *Practical Meta-analysis*. Sage, Thousand Oaks, CA.
- Lislevand, T., Byrkjedal, I., Borge, T. & Sætre, G.-P. 2005. Egg size in relation to sex of embryo, brood sex ratios and laying sequence in northern lapwings (*Vanellus vanellus*). *J. Zool.* **267**: 81–87.

- Love, O.P. & Williams, T.D. 2011. Manipulating developmental stress reveals sex-specific effects of egg size on offspring phenotype. *J. Evol. Biol.* **24**: 1497–1504.
- Magrath, M.J.L., Brouwer, L. & Komdeur, J. 2003. Egg size and laying order in relation to offspring sex in the extreme sexually size dimorphic brown songlark, *Cinchorhamphus cruralis*. *Behav. Ecol. Sociobiol.* **54**: 240–248.
- Martyka, R., Rutkowska, J., Dybek-Karpiuk, A., Cichoń, M. & Walasz, K. 2010. Sexual dimorphism of egg size in the European blackbird *Turdus merula*. *J. Ornithol.* **151**: 827–831.
- Martyka, R., Rutkowska, J. & Cichoń, M. 2011. Sex-specific effects of maternal immunization on yolk antibody transfer and offspring performance in zebra finches. *Biol. Lett.* **7**: 50–53.
- Mead, P.S., Morton, M.L. & Fish, B.E. 1987. Sexual dimorphism in egg size and implications regarding facultative manipulation of sex in mountain white-drowned sparrows. *Condor* **89**: 798–803.
- Morrissey, M.B. & Hadfield, J.D. 2012. Directional selection in temporally replicated studies is remarkably consistent. *Evolution* **66**: 435–442.
- Müller, W., Groothuis, T.G.G., Eising, C.M., Daan, S. & Dijkstra, C. 2005. Within clutch co-variation of egg mass and sex in the black-headed gull. *J. Evol. Biol.* **18**: 661–668.
- Nakagawa, S. & Cuthill, I.C. 2007. Effect size, confidence interval and statistical significance: a practical guide for biologists. *Biol. Rev.* **82**: 591–605.
- Nakagawa, S. & Poulain, R. 2012. Meta-analytic insights into evolutionary ecology: an introduction and synthesis. *Evol. Ecol.* **26**: 1085–1099.
- Nakagawa, S. & Santos, E.S.A. 2012. Methodological issues and advances in biological meta-analysis. *Evol. Ecol.* **26**: 1253–1274.
- Nakagawa, S. & Schielzeth, H. 2010. Repeatability for Gaussian and non-Gaussian data: a practical guide for biologists. *Biol. Rev.* **85**: 935–956.
- Palmer, A.R. 1999. Detecting publication bias in meta-analyses: a case study of fluctuating asymmetry and sexual selection. *Am. Nat.* **154**: 220–233.
- Pariser, E.C., Gilbert, L., Hazon, N., Arnold, K.E. & Graves, J.A. 2012. Mind the gap: the ratio of yolk androgens and antioxidants varies between sons and daughters dependent on paternal attractiveness. *Behav. Ecol. Sociobiol.* **66**: 519–527.
- Petrie, M., Schwabl, H., Brande-Lavridsen, N. & Burke, T. 2001. Maternal investment - sex differences in avian yolk hormone levels. *Nature* **412**: 498.
- Potti, J. & Merino, S. 1994. Heritability estimates and maternal effects on tarsus length in pied flycatchers, *Ficedula hypoleuca*. *Oecologia* **100**: 331–338.
- R Development Core Team 2013 *A language and environment for statistical computing*. R Foundation for Statistical Computing, Vienna.
- Rao, J.N.K. & Scott, A.J. 1992. A simple method for the analysis of clustered binary data. *Biometrics* **48**: 577–585.
- Rohatgi, A. WebPlotDigitizer. URL <http://arohatgi.info/Web-PlotDigitizer/>. Online Source.
- Rubolini, D., Romano, M., Navara, K.J., Karadas, F., Ambrosini, R., Caprioli, M. et al. 2011. Maternal effects mediated by egg quality in the Yellow-legged Gull *Larus michahellis* in relation to laying order and embryo sex. *Front. Zool.* **8**: 24.
- Rutkowska, J. & Cichoń, M. 2002. Maternal investment during egg laying and offspring sex: an experimental study of zebra finches. *Anim. Behav.* **64**: 817–822.
- Rutkowska, J. & Cichoń, M. 2005. Egg size, offspring sex and hatching asynchrony in zebra finches *Taeniopygia guttata*. *J. Avian Biol.* **36**: 12–17.
- Saino, N., Romano, M., Ferrari, R.P., Martinelli, R. & Moller, A.P. 2003. Maternal antibodies but not carotenoids in barn swallow eggs covary with embryo sex. *J. Evol. Biol.* **16**: 516–522.
- Schielzeth, H. 2010. Simple means to improve the interpretability of regression coefficients. *Methods Ecol. Evol.* **1**: 103–113.
- Slagsvold, T., Husby, M. & Sandvik, J. 1992. Growth and sex ratio of nestlings in two species of crows: how important is hatching asynchrony? *Oecologia* **90**: 43–49.
- Stein, R.W. & Williams, T.D. 2013. Extreme intraclutch egg-size dimorphism in Eudyptes Penguins, an evolutionary response to clutch-size maladaptation. *Am. Nat.* **182**: 260–270.
- Teather, K. 1989. Sex and egg size in great-tailed grackles. *Condor* **91**: 203–205.
- Thompson, B. 2002. What future quantitative social science research could look like: confidence intervals for effect sizes. *Educ. Res.* **31**: 25–32.
- Trikalinos, T.A. & Ioannidis, J.P. 2005. Assessing the evolution of effect sizes over time. In: *Publication Bias in Meta-analysis: Prevention, Assessment and Adjustments* (H. Rothstein, A.J. Sutton & M. Borenstein, eds), pp. 241–259. John Wiley, Chichester.
- Viechtbauer, W. 2010. Conducting meta-analyses in R with the metafor. *J. Stat. Softw.* **36**: 1–48.
- Weatherhead, P. 1985. Sex ratios of red-winged blackbirds by egg size and laying sequence. *Auk* **102**: 298–304.
- Weatherhead, P.J. & Teather, K.L. 1994. Sexual size dimorphism and egg-size allometry in birds. *Evolution* **48**: 671–678.
- West, S.A. & Sheldon, B.C. 2002. Constraints in the evolution of sex ratio adjustment. *Science* **295**: 1685–1688.
- Wetzel, D.P., Stewart, I.R.K. & Westneat, D.F. 2012. Heterozygosity predicts clutch and egg size but not plasticity in a house sparrow population with no evidence of inbreeding. *Mol. Ecol.* **21**: 406–420.
- Williams, T.D. 1994. Intraspecific variation in egg size and egg composition in birds: effects on offspring fitness. *Biol. Rev.* **69**: 35–59.

## Supporting information

Additional Supporting Information may be found in the online version of this article:

**Table S1** Database used in the analyses.

**Data S1** Additional methods and results.

Received 31 August 2013; revised 15 October 2013; accepted 21 October 2013